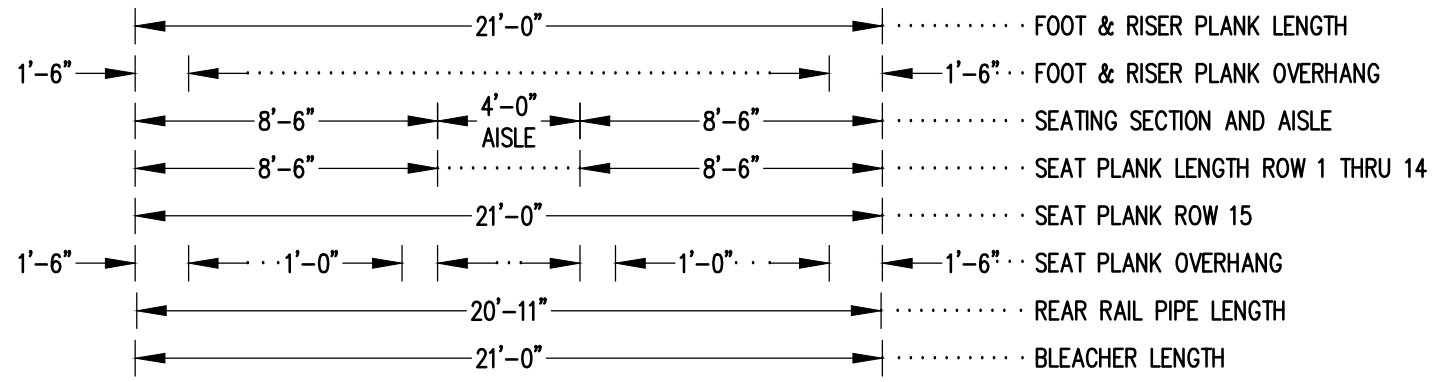
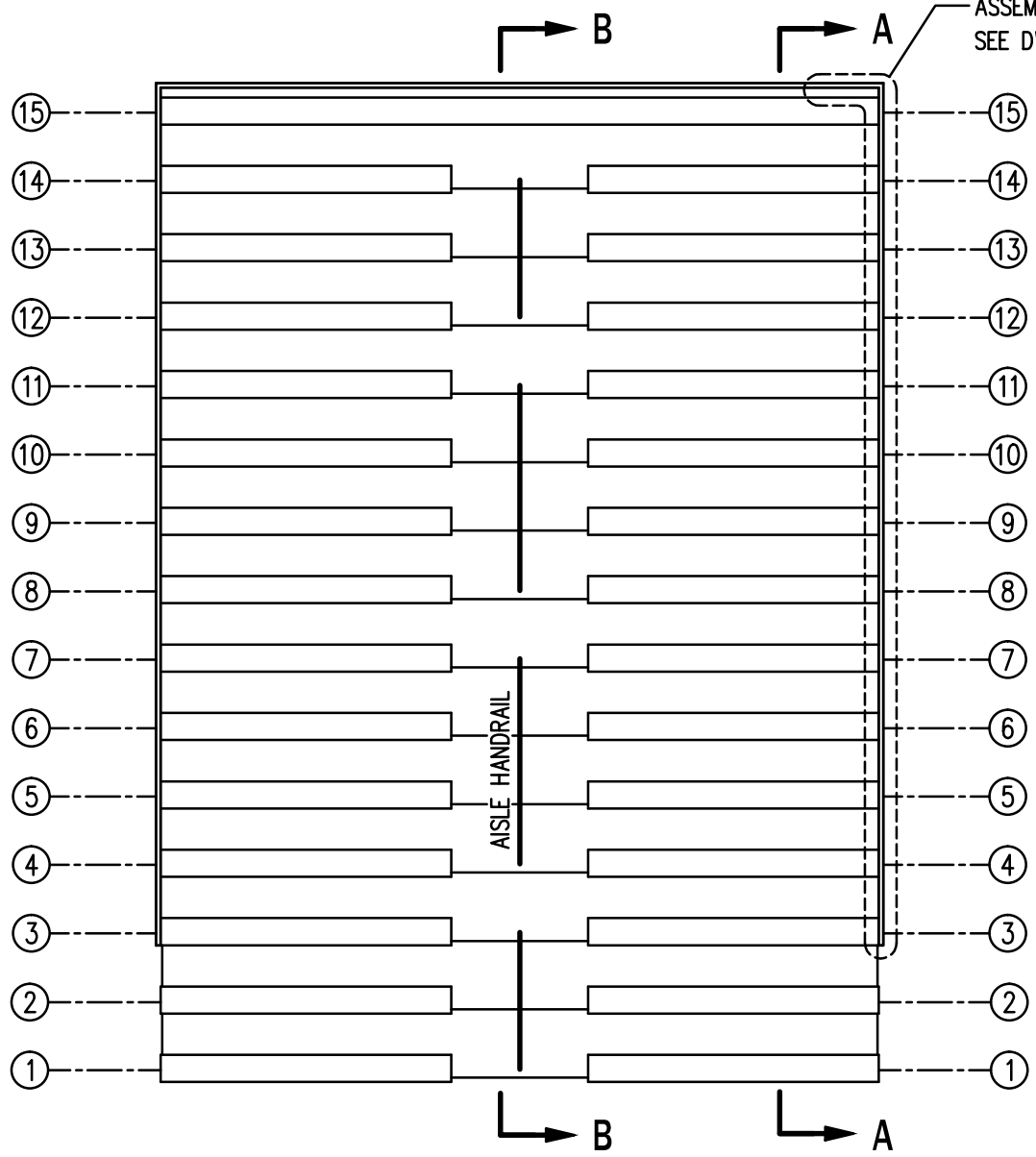



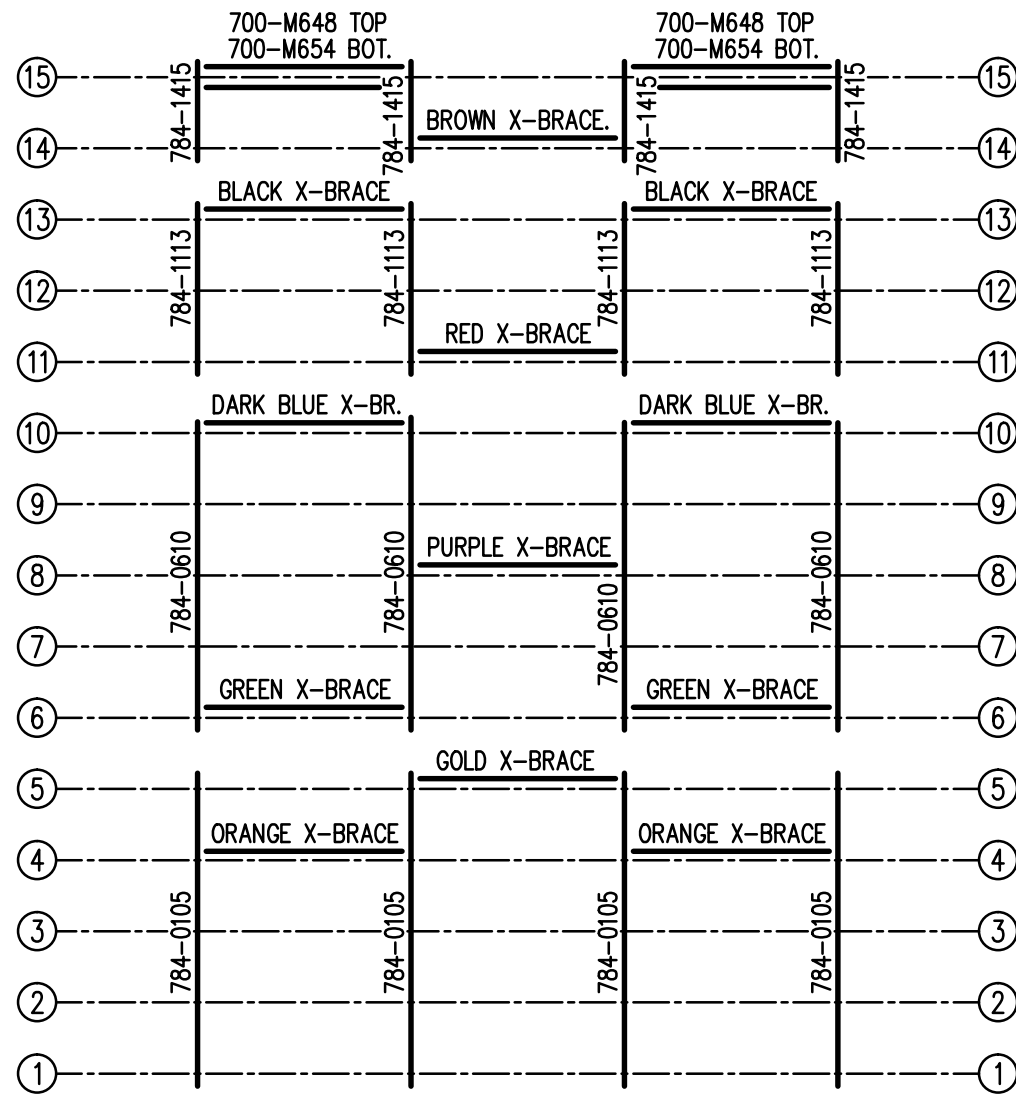
SEE REAR CORNER TIE
ASSEMBLY DETAIL
SEE DWG. 784-E1990



SEATING PLAN

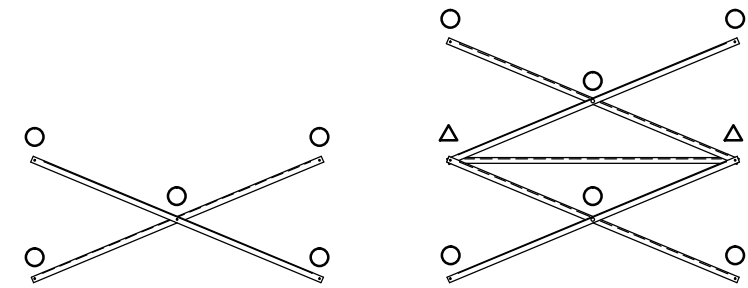
3/16" = 1'-0"
154 NET SEATS @ 18" PER SEAT

		Outdoor Aluminum		P.O. BOX 118 GENEVA, ALABAMA 36340 334-684-2296	
		SCALE	3/16"=1'-0"	REVISIONS	BY
DATE	11/2/11				
DR'N	CDK	CKD			
AP'VD					
TITLE				NO.	
DLW 15-21 SEATING PLAN				784-E2278	



FRAMING PLAN


3/16" = 1'-0"

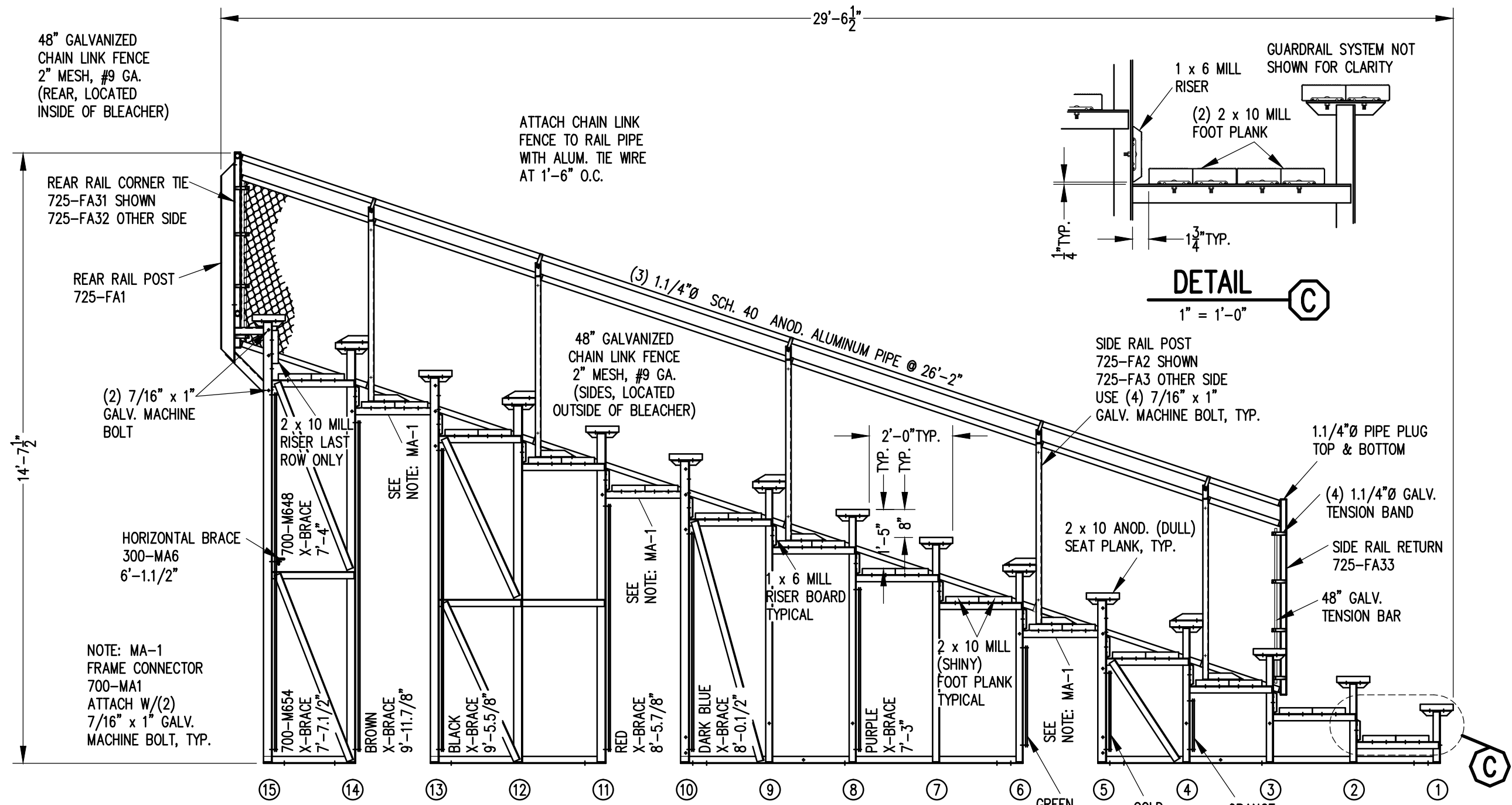


X-BRACE DETAIL

N.T.S.

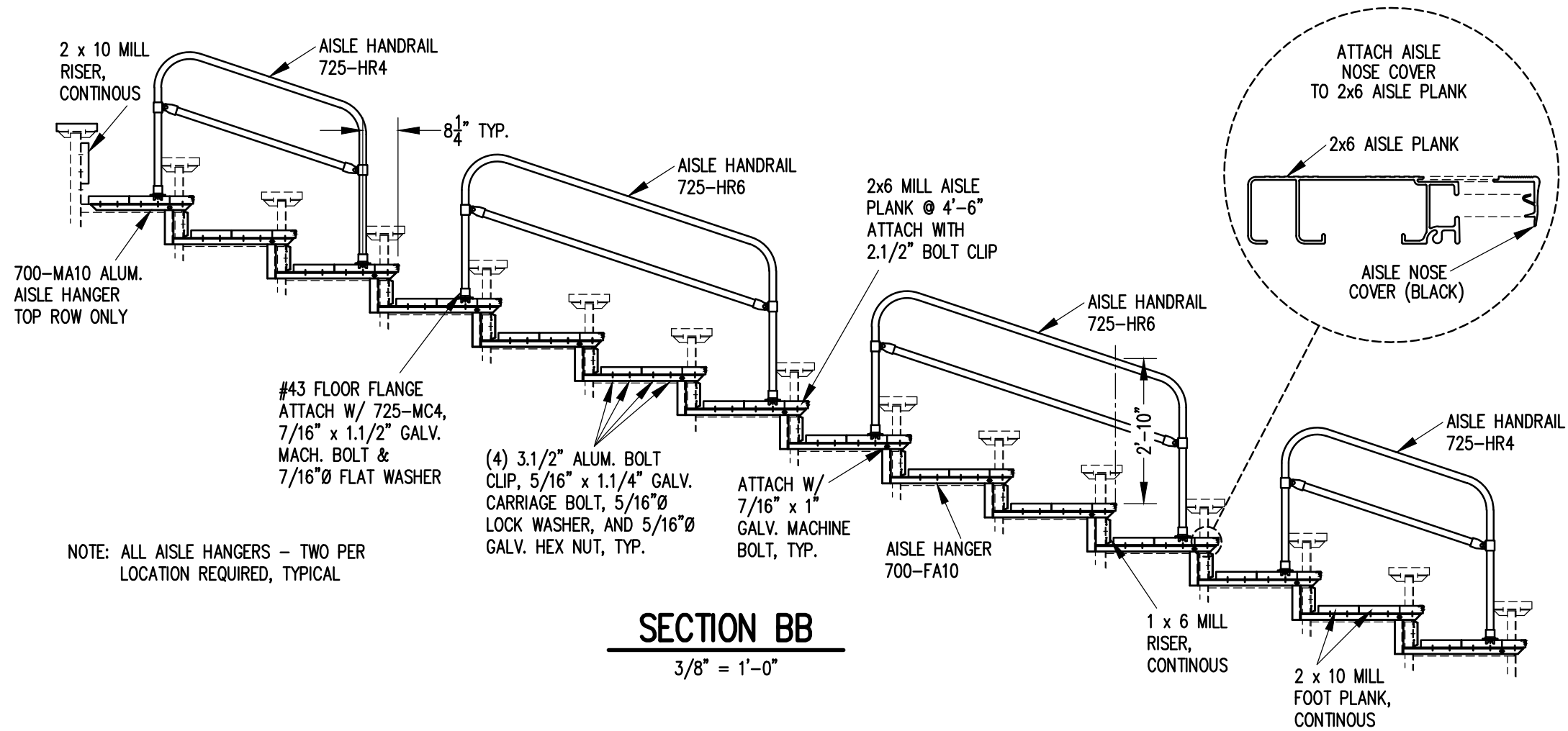
- 7/16" X 1" GALV. MACH. BOLT
- △ 7/16" X 1.1/2" GALV. MACH. BOLT

		Outdoor Aluminum P.O. BOX 118 GENEVA, ALABAMA 36340 334-684-2296	
DATE 11/2/11			
DR'N <i>ADK</i>	CKD		
AP'VD			
TITLE DLW 15-21 FRAMING PLAN			NO. 784-E2279




SECTION AA
3/8" = 1'-0"

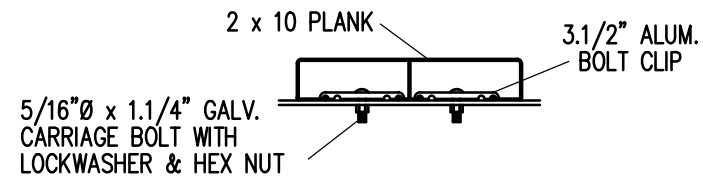
		Outdoor Aluminum		P.O. BOX 118 GENEVA, ALABAMA 36340 334-684-2296	
				SCALE	REVISIONS
SCALE 3/8"=1'-0"					
DATE 11/2/11					
DR'N GPK CKD					
AP'VD					
TITLE				NO.	
DLW 15 ROW SECTION				784-E2293	



SECTION BB

3/8" = 1'-0"

		Outdoor Aluminum		P.O. BOX 118 GENEVA, ALABAMA 36340 334-684-2296	
SCALE	3/8"=1'-0"	REVISIONS		BY	DATE
DATE	11/2/11				
DR'N	CDK	CKD			
AP'VD					
TITLE				NO.	
DLW 15 ROW AISLE SECTION				784-E2016	



BOLT CLIP DETAIL

1.1/2" = 1'-0"

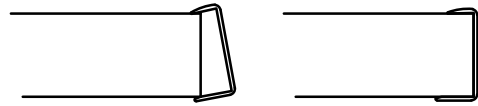


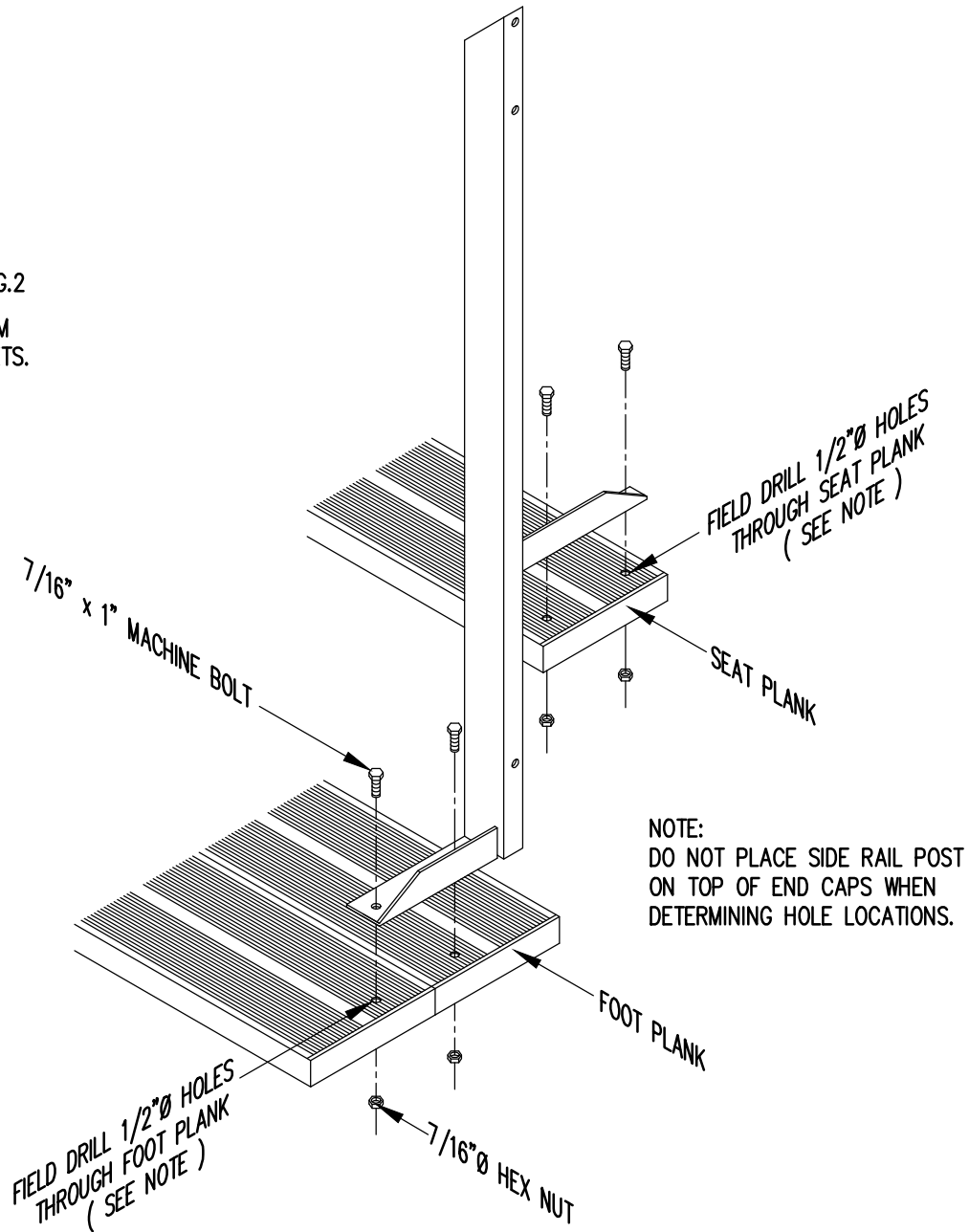
FIG.1

FIG.2

- 1) LOCATE THE CHANNEL END CAP AS SHOWN IN FIG. 1.
- 2) TAP END CAP INTO PLACE WITH RUBBER Mallet OR SOFT WOOD. FIG.2
- 3) DRILL 5/32" HOLES THROUGH THE BOTTOM FLANGE AND THE BOTTOM OUTSIDE PLANK FLANGES OF EACH PLANK. INSTALL 5/32" POP RIVETS.

END CAP DETAIL

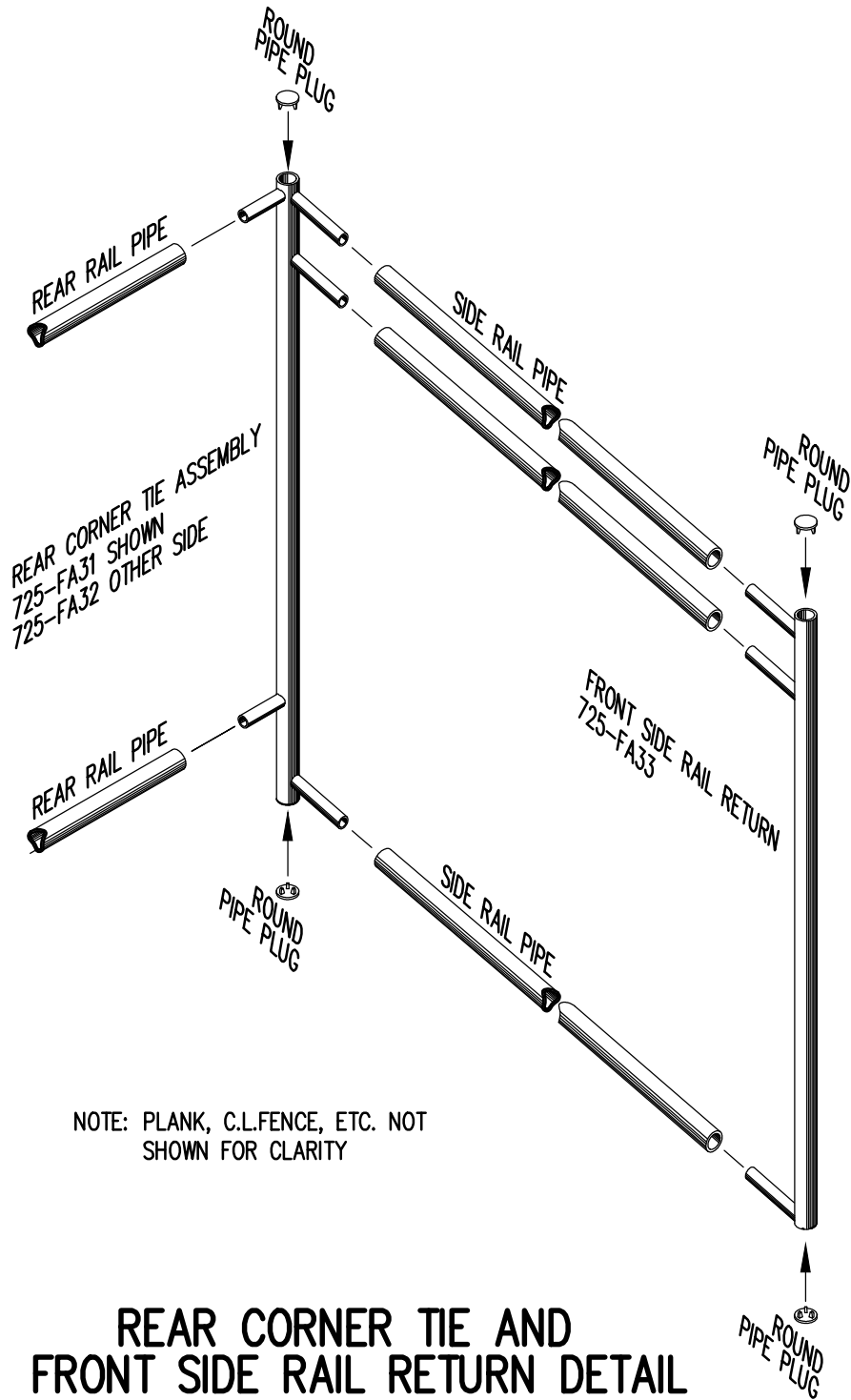
N.T.S.



NOTE:
DO NOT PLACE SIDE RAIL POST
ON TOP OF END CAPS WHEN
DETERMINING HOLE LOCATIONS.

TYP. SIDE RAIL POST ATTACHMENT

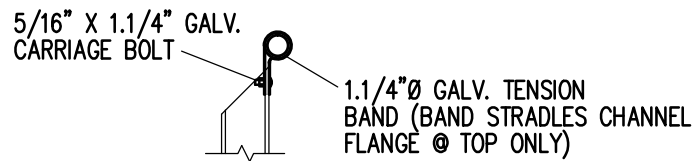
1" = 1'-0"



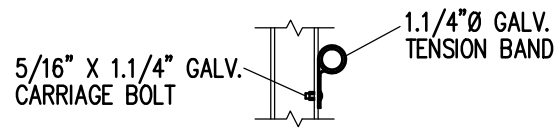
NOTE: PLANK, C.L.FENCE, ETC. NOT SHOWN FOR CLARITY

REAR CORNER TIE AND FRONT SIDE RAIL RETURN DETAIL

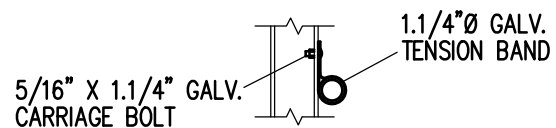
3/4" = 1'-0"



TOP RAIL



2ND RAIL



BOTTOM RAIL

RAIL PIPE ATTACHMENT



Outdoor Aluminum

P.O. BOX 118
GENEVA, ALABAMA 36340
334-684-2296

SCALE	AS NOTED	REVISIONS	BY	DATE
DATE	11/2/11			
DR'N	CDK	CKD		
AP'VD				
TITLE	TYPICAL DETAILS		NO.	784-E1990