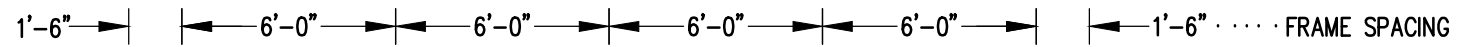
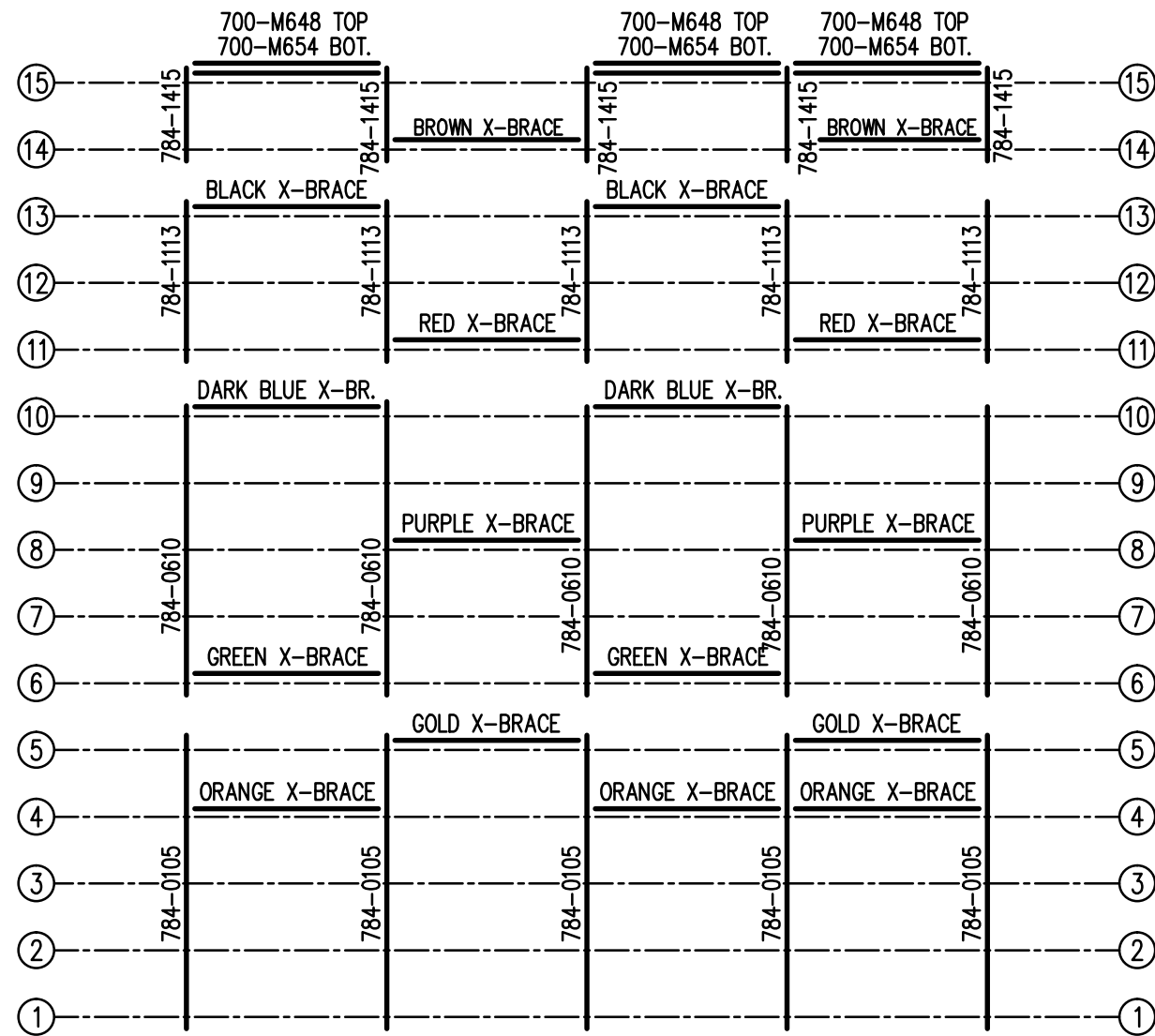


SEATING PLAN

3/16" = 1'-0"

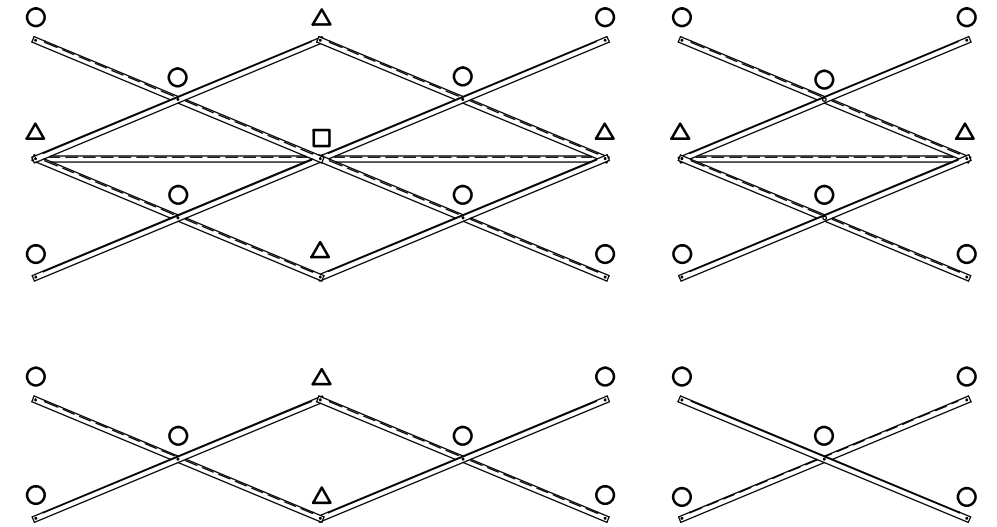
214 NET SEATS @ 18" PER SEAT

		P.O. BOX 118 GENEVA, ALABAMA 36340 334-684-2296			
		SCALE	REVISIONS	BY	DATE
SCALE	3/16"=1'-0"				
DATE	11/2/11				
DR'N	CDK	CKD			
AP'VD					
TITLE				NO.	
DLW 15-27 SEATING PLAN				784-E2283	



FRAMING PLAN

3/16" = 1'-0"

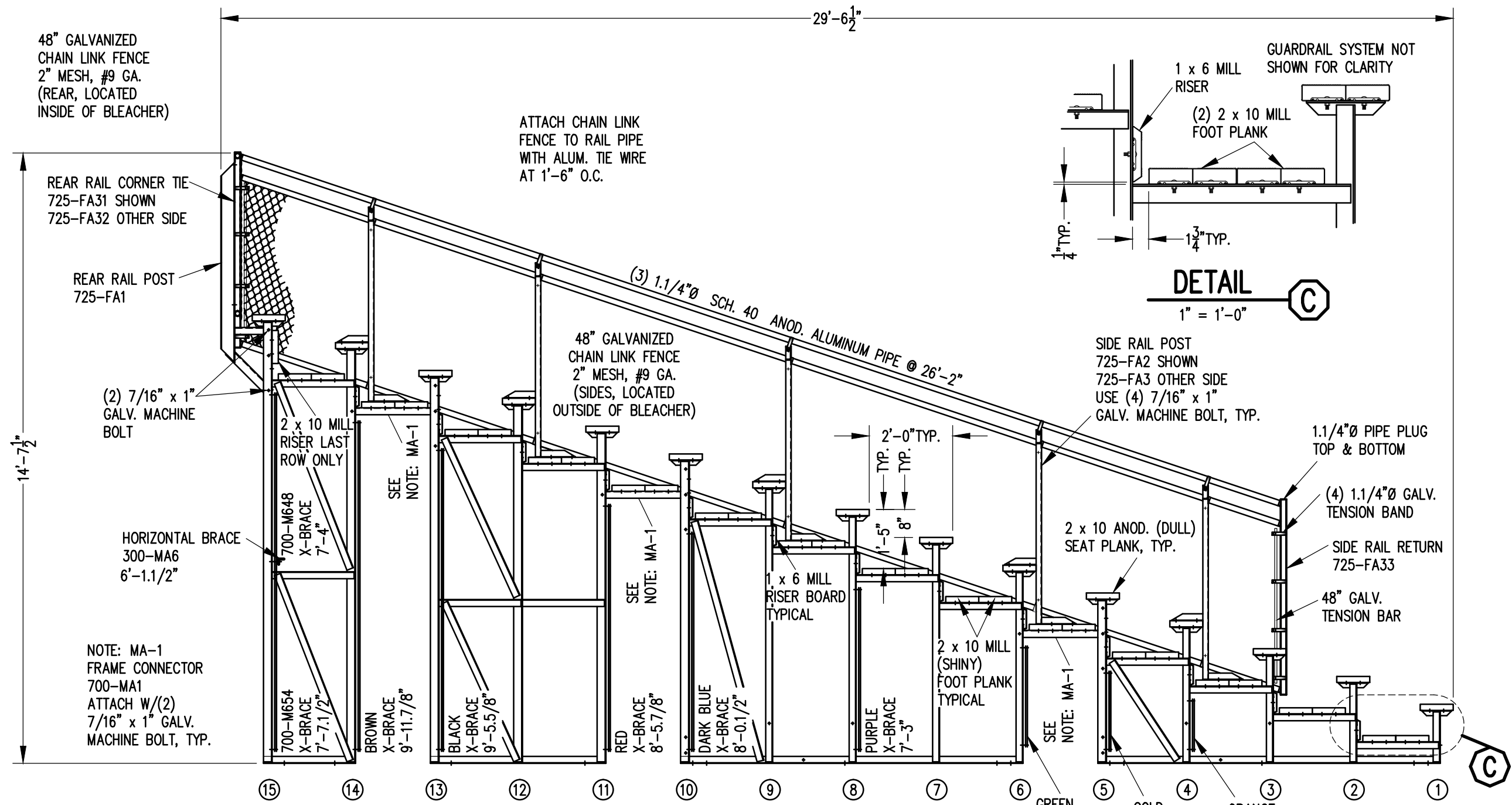


X-BRACE DETAIL


N.T.S.

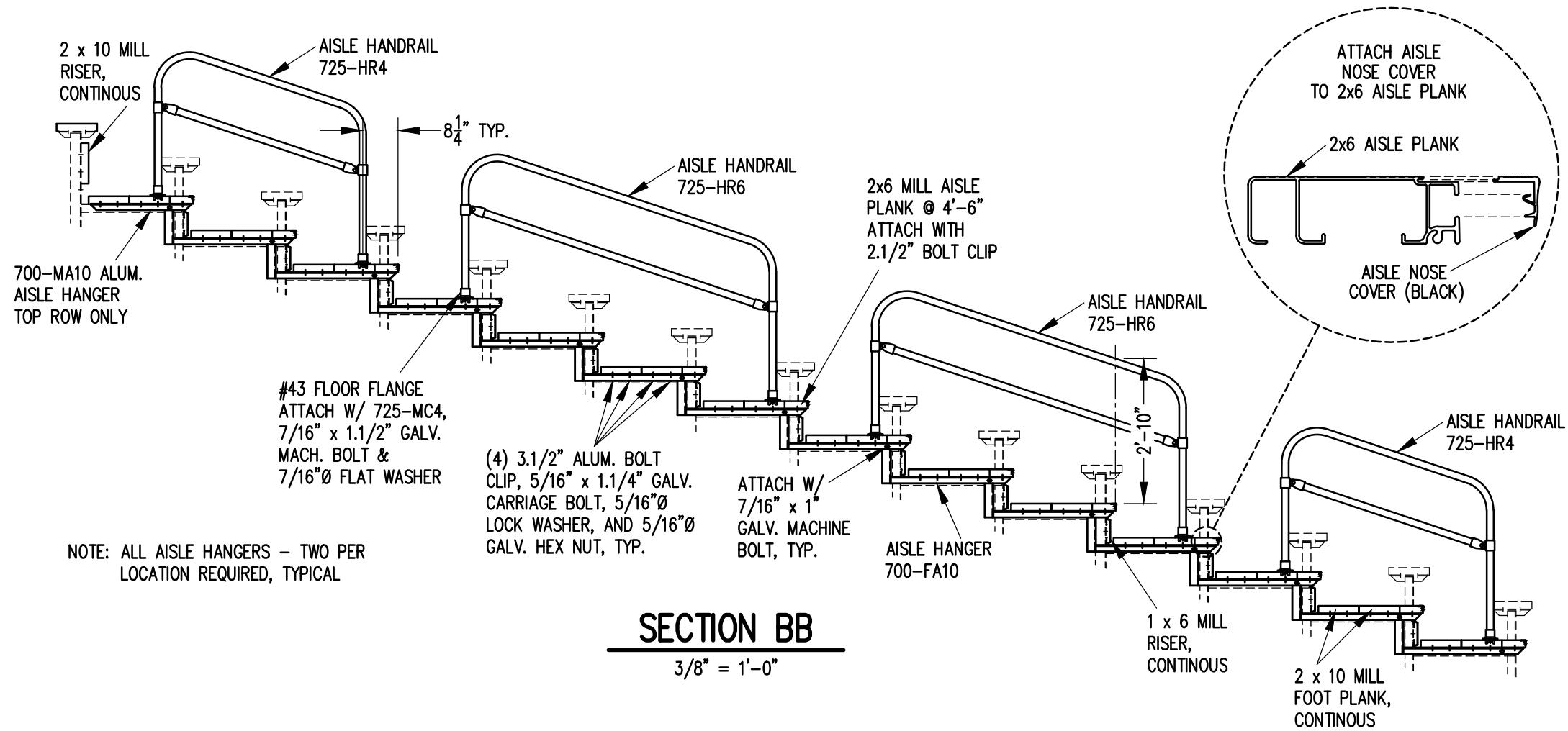
- 7/16" X 1" GALV. MACH. BOLT
- △ 7/16" X 1.1/2" GALV. MACH. BOLT
- 7/16" X 3" GALV. MACH. BOLT

		P.O. BOX 118 GENEVA, ALABAMA 36340 334-684-2296	
		SCALE AS NOTED	REVISIONS
DATE 11/2/11			
DR'N <i>CDK</i>	CKD		
AP'VD			
TITLE			NO.
DLW 15-27 FRAMING PLAN			784-E2284




SECTION AA
3/8" = 1'-0"

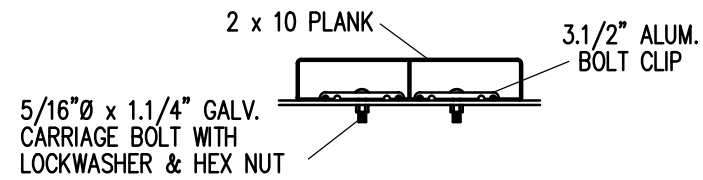
		Outdoor Aluminum P.O. BOX 118 GENEVA, ALABAMA 36340 334-684-2296	
SCALE 3/8"=1'-0"			
DATE 11/2/11			
DR'N GPK CKD			
AP'VD			
TITLE		NO.	
DLW 15 ROW SECTION		784-E2293	



SECTION BB

3/8" = 1'-0"

		Outdoor Aluminum P.O. BOX 118 GENEVA, ALABAMA 36340 334-684-2296	
SCALE 3/8"=1'-0"			
DATE 11/2/11			
DR'N <i>CDK</i> CKD			
AP'VD			
TITLE			NO.
DLW 15 ROW AISLE SECTION			784-E2016



BOLT CLIP DETAIL

1.1/2" = 1'-0"

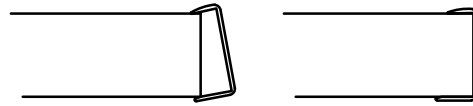


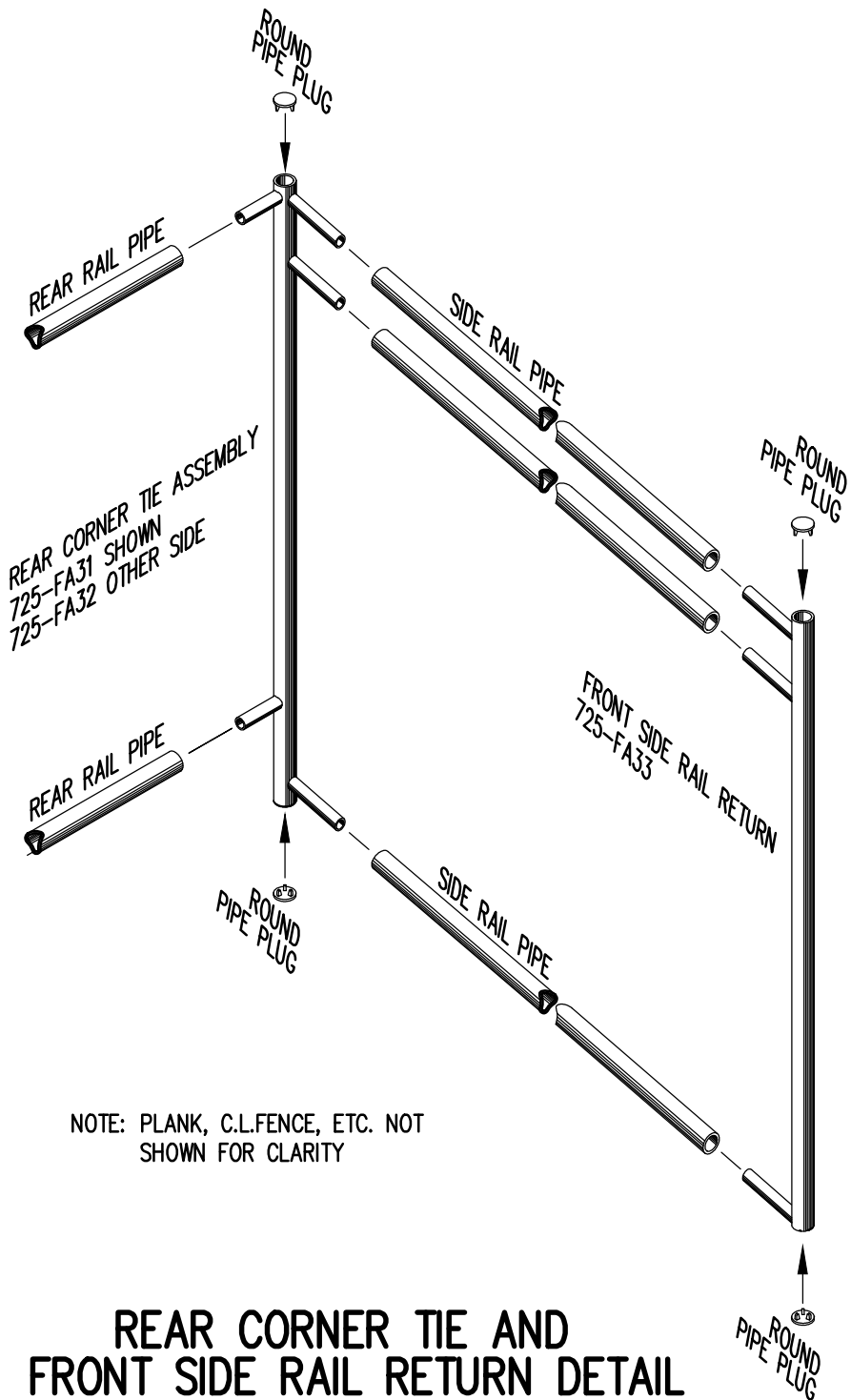
FIG.1

FIG.2

- 1) LOCATE THE CHANNEL END CAP AS SHOWN IN FIG. 1.
- 2) TAP END CAP INTO PLACE WITH RUBBER Mallet OR SOFT WOOD. FIG.2
- 3) DRILL 5/32" HOLES THROUGH THE BOTTOM FLANGE AND THE BOTTOM OUTSIDE PLANK FLANGES OF EACH PLANK. INSTALL 5/32" POP RIVETS.

END CAP DETAIL

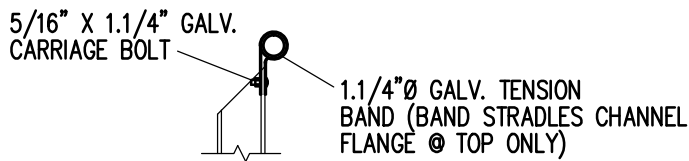
N.T.S.



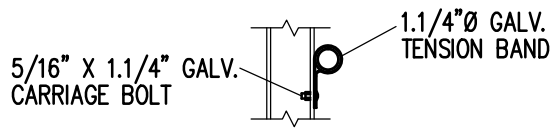
REAR CORNER TIE AND FRONT SIDE RAIL RETURN DETAIL

3/4" = 1'-0"

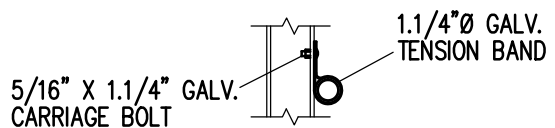
NOTE: PLANK, C.L.FENCE, ETC. NOT SHOWN FOR CLARITY



TOP RAIL

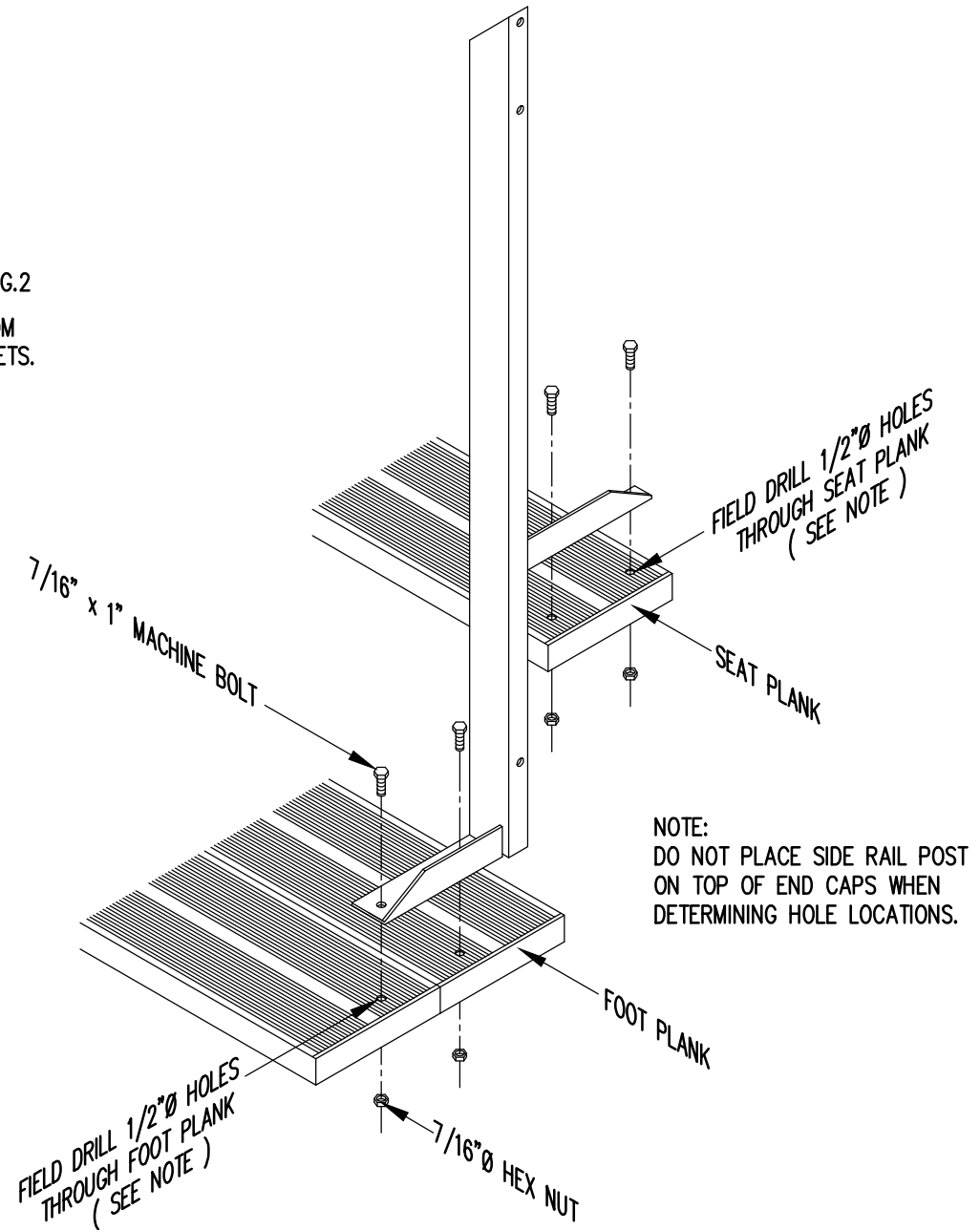


2ND RAIL



BOTTOM RAIL

RAIL PIPE ATTACHMENT



TYP. SIDE RAIL POST ATTACHMENT

1" = 1'-0"

NOTE: DO NOT PLACE SIDE RAIL POST ON TOP OF END CAPS WHEN DETERMINING HOLE LOCATIONS.

		P.O. BOX 118 GENEVA, ALABAMA 36340 334-684-2296			
		SCALE AS NOTED	REVISIONS	BY	DATE
DATE	11/2/11				
DR'N	CDK	CKD			
AP'VD					
TITLE				NO.	
TYPICAL DETAILS				784-E1990	