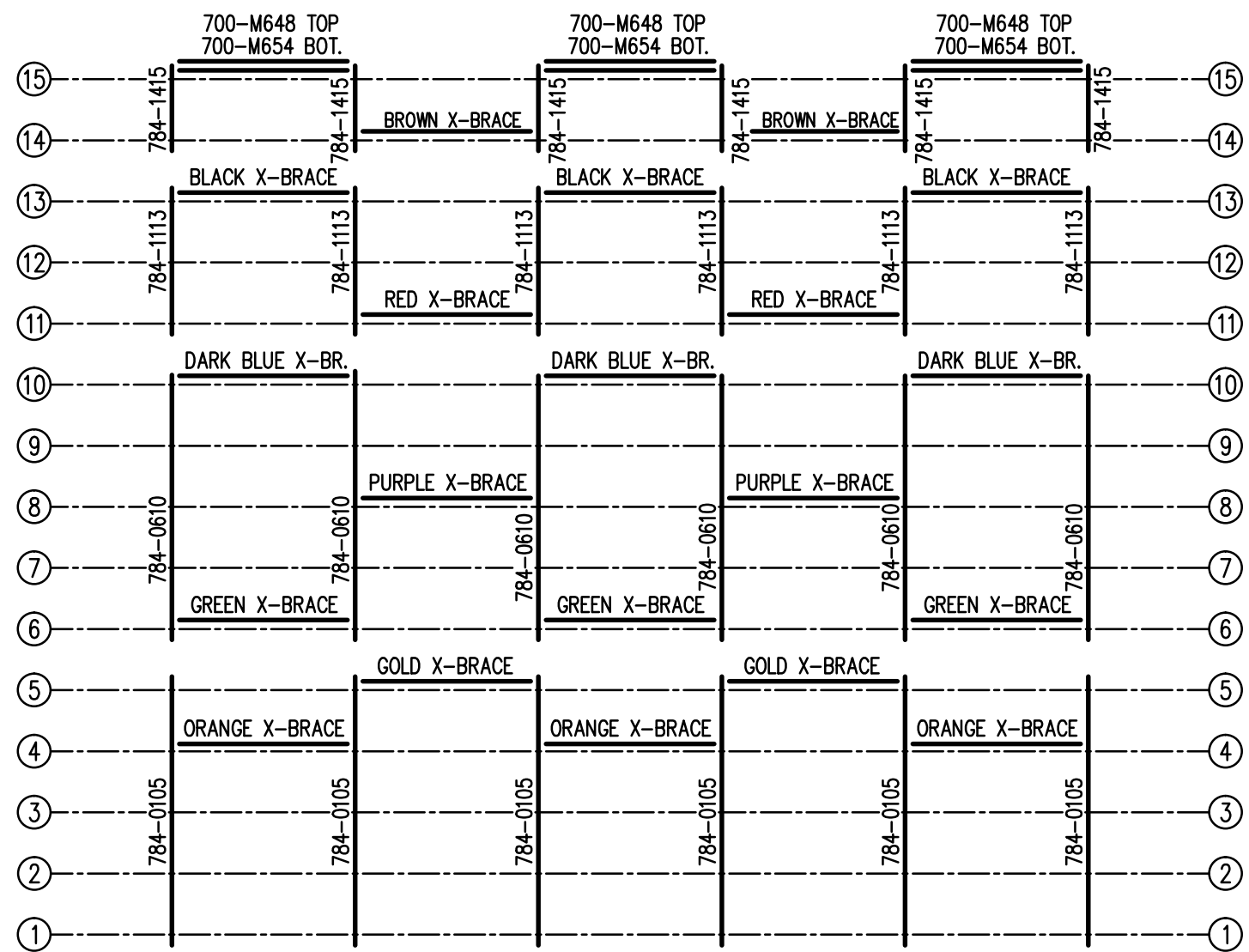


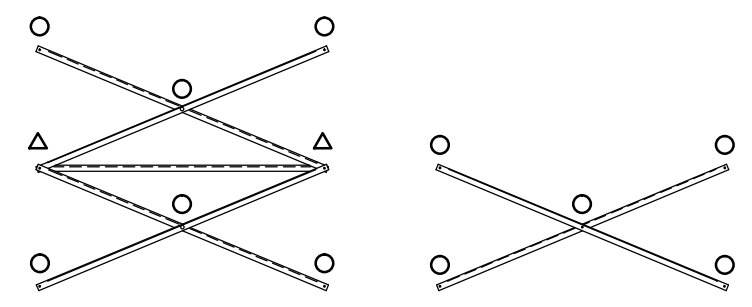
**SEATING PLAN**  
 3/16" = 1'-0"  
 274 NET SEATS @ 18" PER SEAT

		P.O. BOX 118 GENEVA, ALABAMA 36340 334-684-2296	
		SCALE <b>3/16"=1'-0"</b>	REVISIONS
DATE <b>11/2/11</b>			
DR'N <i>CDK</i>	CKD		
AP'VD			
TITLE			NO.
DLW 15-33 SEATING PLAN			<b>784-E2288</b>



### FRAMING PLAN


3/16" = 1'-0"

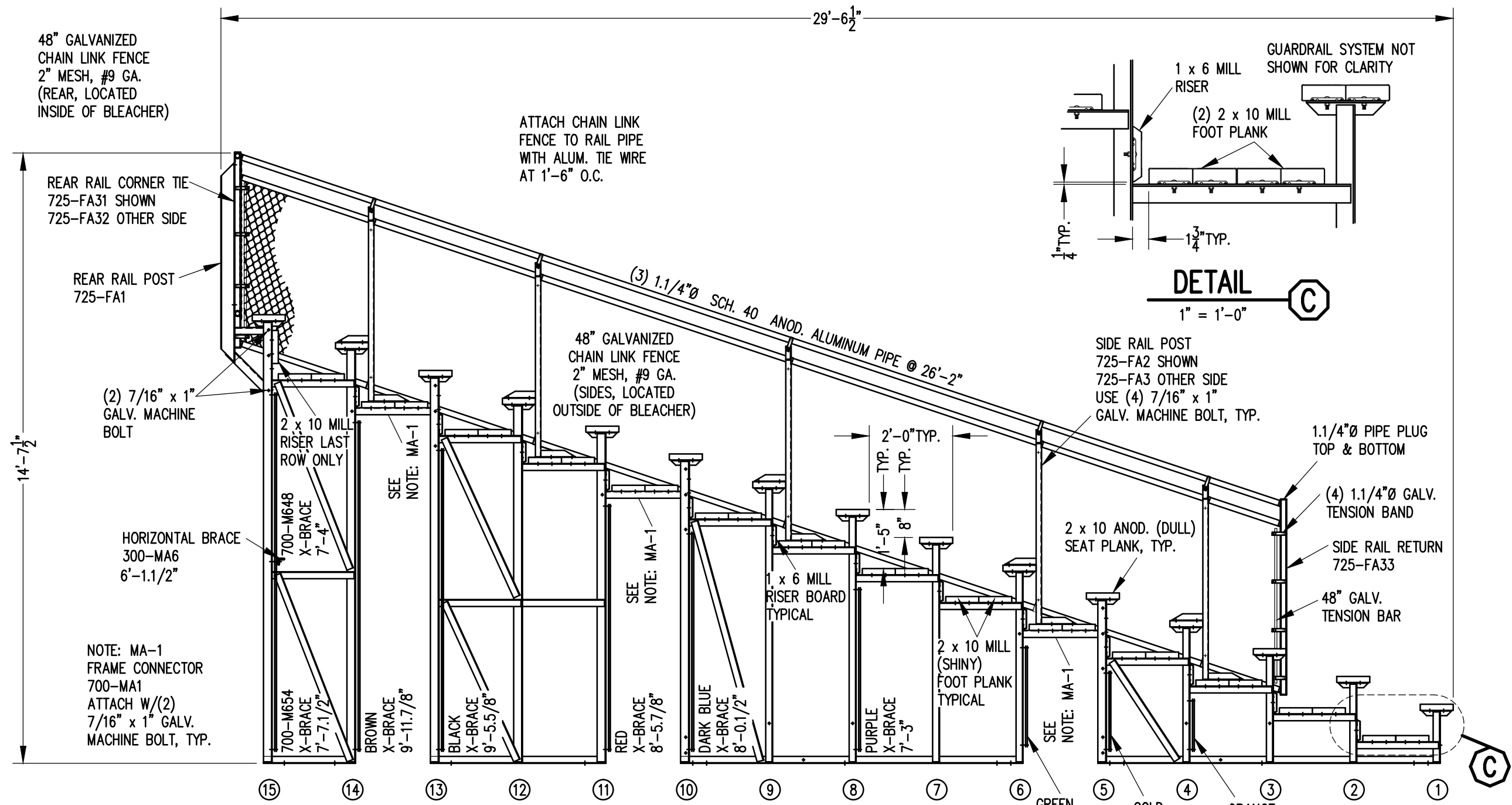


### X-BRACE DETAIL

N.T.S.

- 7/16" X 1" GALV. MACH. BOLT
- △ 7/16" X 1.1/2" GALV. MACH. BOLT

		<b>Outdoor Aluminum</b>		<small>P.O. BOX 118 GENEVA, ALABAMA 36340 334-684-2296</small>	
SCALE	AS NOTED	REVISIONS		BY	DATE
DATE	11/2/11				
DR'N	CDK CKD				
AP'VD					
TITLE				NO.	
DLW 15-33 FRAMING PLAN				784-E2289	



48" GALVANIZED CHAIN LINK FENCE 2" MESH, #9 GA. (REAR, LOCATED INSIDE OF BLEACHER)

ATTACH CHAIN LINK FENCE TO RAIL PIPE WITH ALUM. TIE WIRE AT 1'-6" O.C.

GUARDRAIL SYSTEM NOT SHOWN FOR CLARITY

**DETAIL C**  
1" = 1'-0"

**SECTION AA**  
3/8" = 1'-0"

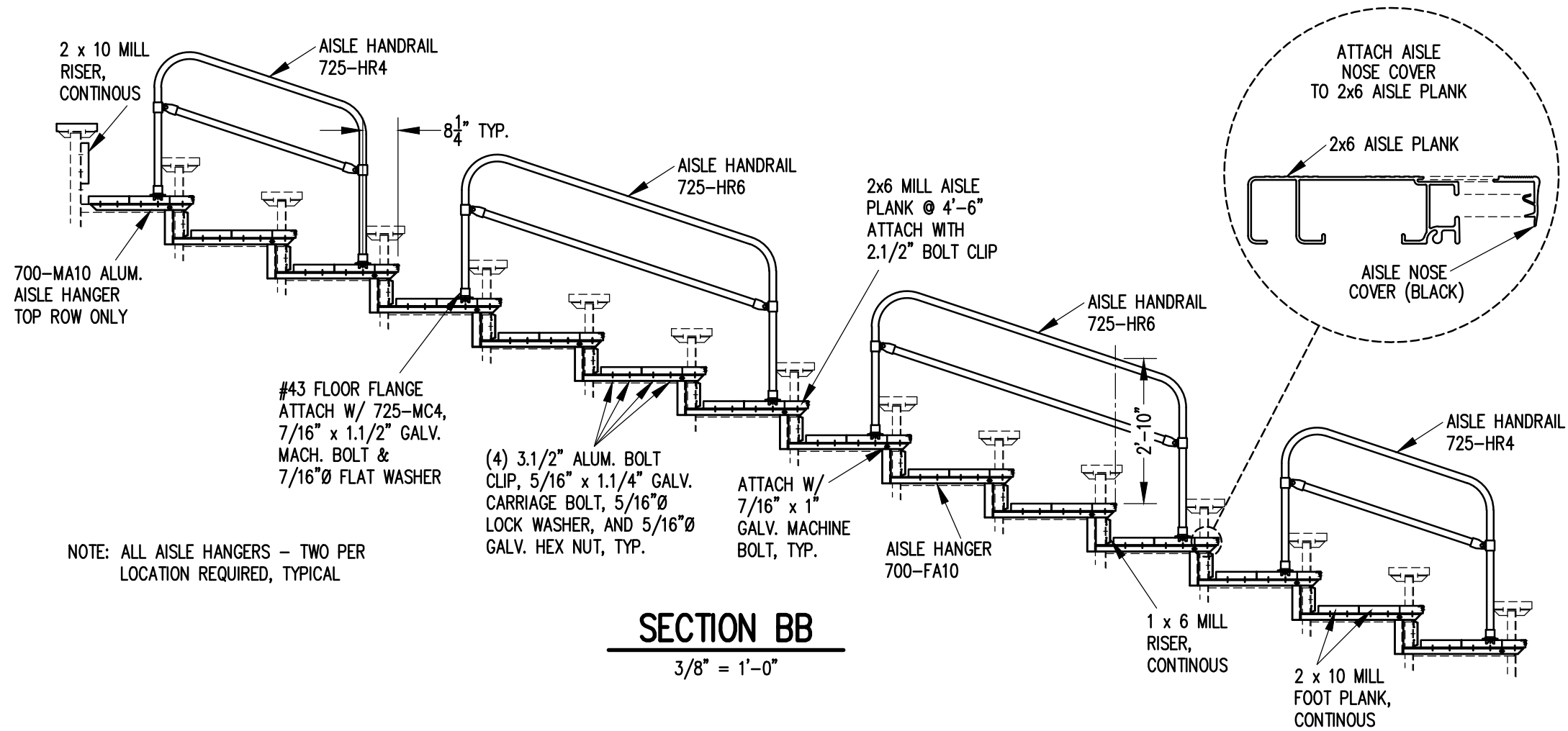
NOTE: MA-1  
FRAME CONNECTOR  
700-MA1  
ATTACH W/(2)  
7/16" x 1" GALV.  
MACHINE BOLT, TYP.

SIDE RAIL POST  
725-FA2 SHOWN  
725-FA3 OTHER SIDE  
USE (4) 7/16" x 1"  
GALV. MACHINE BOLT, TYP.

1.1/4"Ø PIPE PLUG  
TOP & BOTTOM  
(4) 1.1/4"Ø GALV.  
TENSION BAND  
SIDE RAIL RETURN  
725-FA33  
48" GALV.  
TENSION BAR


GREEN  
X-BRACE  
6'-6.3/4"  
GOLD  
X-BRACE  
6'-4.3/4"  
ORANGE  
X-BRACE  
6'-2.7/8"

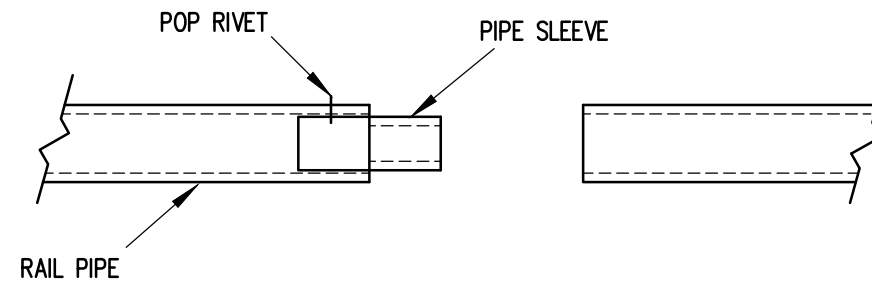
		<b>Outdoor Aluminum</b> P.O. BOX 118 GENEVA, ALABAMA 36340 334-684-2296	
DATE 11/2/11			
DR'N GPK	CKD		
AP'VD			
TITLE DLW 15 ROW SECTION			NO. <b>784-E2293</b>



**SECTION BB**

3/8" = 1'-0"

		<b>Outdoor Aluminum</b> P.O. BOX 118 GENEVA, ALABAMA 36340 334-684-2296			
				SCALE	REVISIONS
3/8"=1'-0"					
DATE 11/2/11					
DR'N <i>CDK</i> CKD					
AP'VD					
TITLE				NO.	
DLW 15 ROW AISLE SECTION				784-E2016	

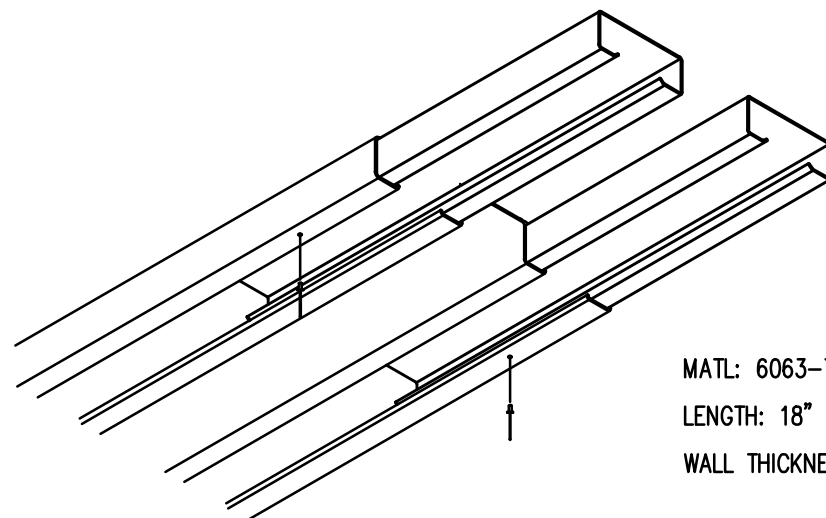


### PIPE SLEEVE ASSEMBLY

1.1/2" = 1' 0"

- 1) INSERT PIPE SLEEVE APPROXIMATELY HALFWAY INTO THE RAIL PIPE. FASTEN PIPE SLEEVE WITH (1) ALUMINUM POP RIVET (5/32" X 5/8")
- 2) SLIDE THE END OF THE ADJOINING RAILPIPE OVER THE PIPE SLEEVE UNTIL THE TWO RAILS ARE FLUSH.

NOTE: PIPE SLEEVES SHOULD BE ATTACHED ON ONLY ONE END TO ALLOW FOR EXPANSION.




MATL: 6063-T6 ALUMN.  
 LENGTH: 18"  
 WALL THICKNESS: .062"

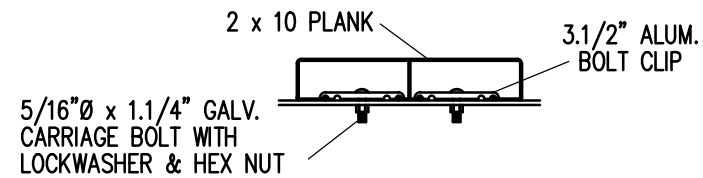
### PLANK SPLICE SLEEVE ASSEMBLY

(TYP. @ ALL PLANK SPLICES)

- 1) INSERT SLEEVES APPROXIMATELY HALFWAY INTO THE PLANK WITH THE ENDS STAGGERED ABOUT 1/2". FASTEN SLEEVE WITH (1) ALUMINUM POP RIVET.
- 2) SLIDE THE END OF THE ADJOINING PLANK OVER THE SLEEVES UNTIL THE TWO PLANKS ARE SNUG.

NOTE: SLEEVES SHOULD BE ATTACHED ON ONLY ONE END TO ALLOW FOR EXPANSION.

		<b>Outdoor Aluminum</b> <small>P.O. BOX 118        GENEVA, ALABAMA 36340        334-684-2296</small>	
DATE <b>11/2/11</b>			
DR'N <i>CDK</i>	CKD		
AP'VD			
TITLE <b>SPLICE SLEEVE ASSEMBLY</b>			NO. <b>784-E1994</b>



**BOLT CLIP DETAIL**

1.1/2" = 1'-0"

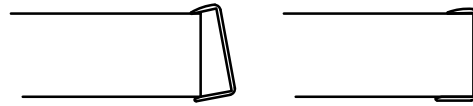


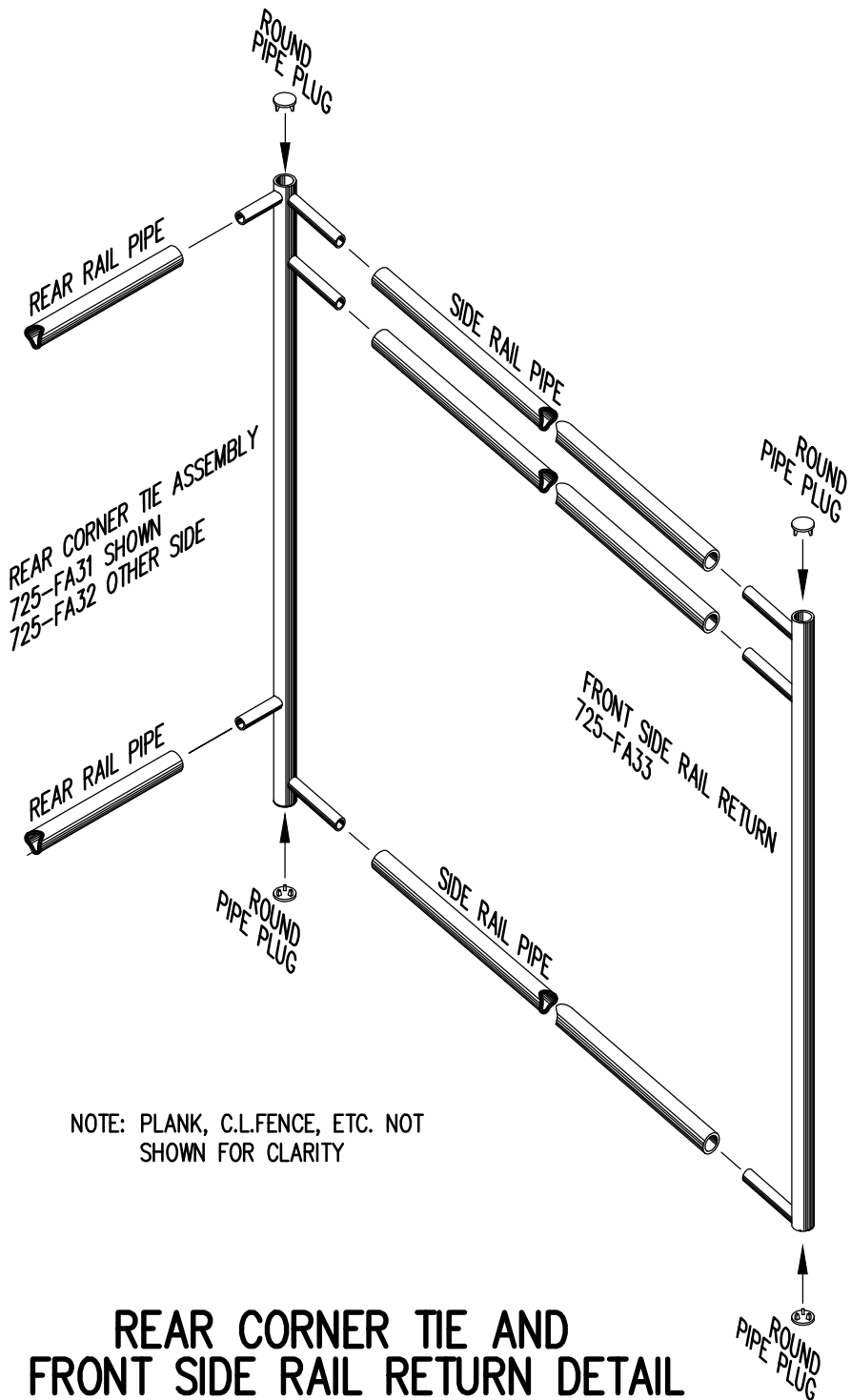
FIG.1

FIG.2

- 1) LOCATE THE CHANNEL END CAP AS SHOWN IN FIG. 1.
- 2) TAP END CAP INTO PLACE WITH RUBBER Mallet OR SOFT WOOD. FIG.2
- 3) DRILL 5/32" HOLES THROUGH THE BOTTOM FLANGE AND THE BOTTOM OUTSIDE PLANK FLANGES OF EACH PLANK. INSTALL 5/32" POP RIVETS.

**END CAP DETAIL**

N.T.S.



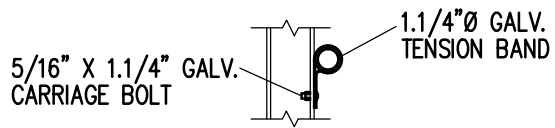
NOTE: PLANK, C.L.FENCE, ETC. NOT SHOWN FOR CLARITY

**REAR CORNER TIE AND FRONT SIDE RAIL RETURN DETAIL**

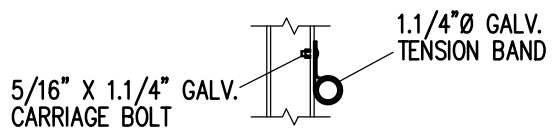
3/4" = 1'-0"



**TOP RAIL**

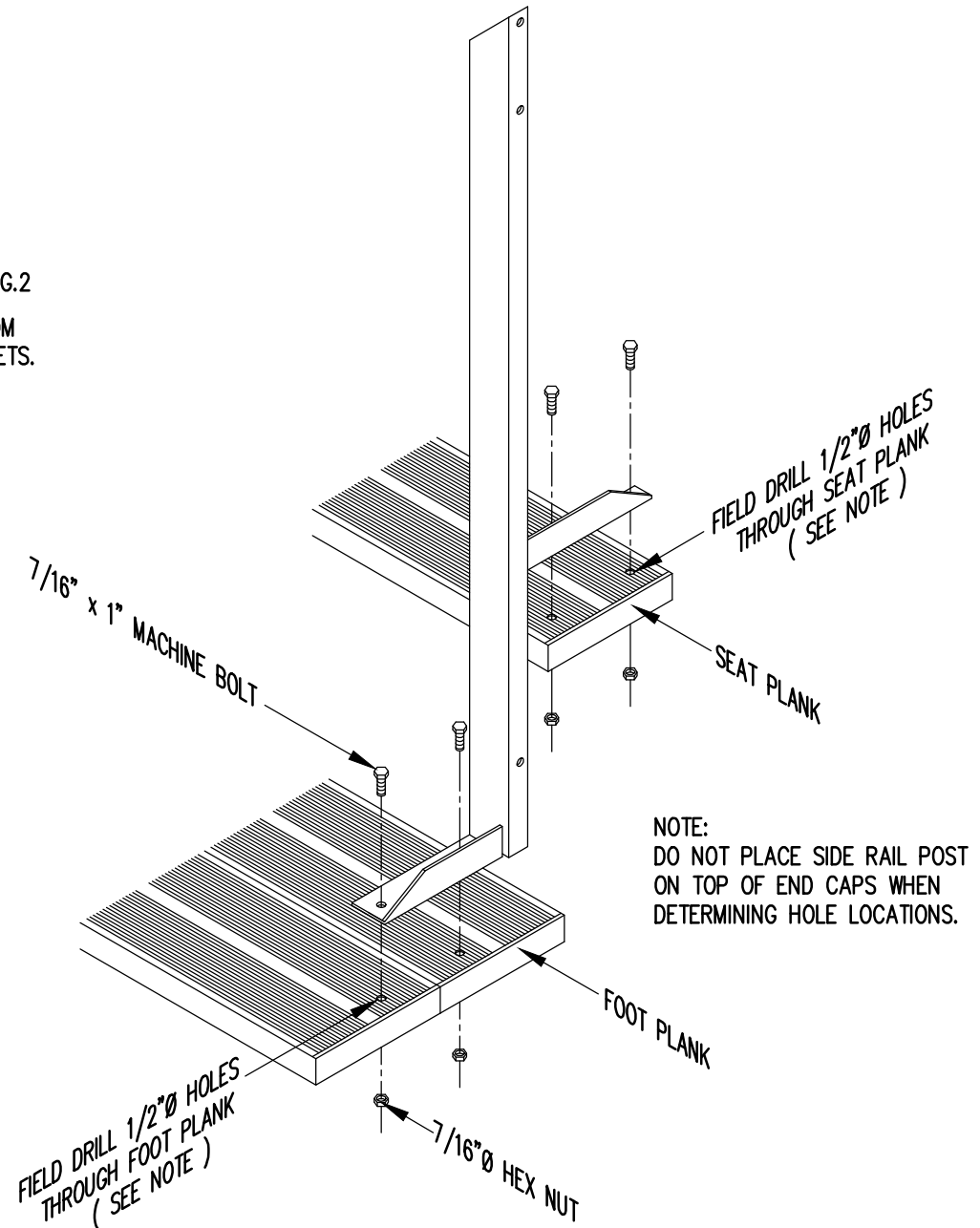


**2ND RAIL**



**BOTTOM RAIL**

**RAIL PIPE ATTACHMENT**



NOTE: DO NOT PLACE SIDE RAIL POST ON TOP OF END CAPS WHEN DETERMINING HOLE LOCATIONS.

**TYP. SIDE RAIL POST ATTACHMENT**

1" = 1'-0"

		P.O. BOX 118 GENEVA, ALABAMA 36340 334-684-2296				
		SCALE	AS NOTED	REVISIONS	BY	DATE
DATE	11/2/11					
DR'N	CDK	CKD				
AP'VD						
TITLE						NO.
TYPICAL DETAILS						<b>784-E1990</b>